



Textual Study of How Eun Hwan Portrays Introverted Character in “Introverted Boss” Movie

Garda Arif Wicaksono

Master of English Language Education. Faculty of Education. Universitas Ahmad Dahlan.
Umbulharjo Yogyakarta, Special Region of Yogyakarta
garda_arifw@yahoo.co.id

ABSTRACT

The aim of this study is (1) to describe the signs of an introverted character, (2) to understand the main actor's introverted character in *Introverted Boss*, (3) to see why "Eun Hwan Gi" became an introvert, and (4) to identify Eun Gi's efforts to get rid of his introverted character. The research highlights the Introvert personality of the main character in the *Introvert Boss* film. This type of research is qualitative and focuses on descriptive-analytical methods. This research is qualitative and focuses on methods that are descriptive and analytical. The researcher himself was the instrument used in this study and encouraged in the data inventory format. Eun Hwan Gi had six introverted traits, including social weaknesses, shyness, fear, too much perception, fear, and closeness. The main reasons the main actor has become an introvert are family pressure factors and verbal abuse. In addition to the signs, training, playing games, and developing relationships are the foremost efforts of the actor to minimize such personality. Based on the findings of the research, the film *Introverted Boss* can be used to identify signs of an introverted character as a reference analysis material. In addition to the sign, the analysis focuses on the reasons for an introvert and Eun Hwan Gi's efforts to reduce his introverted character.

Keywords: introverted characters, causes, and efforts, introvert Boss movie

Citation APA style: **Wicaksono, G. A. (2020). Textual Study of How Eun Hwan Portrays Introverted Character in “Introverted Boss” Movie. *English Language in Focus (ELIF)*, 3(1), 11-22. <https://doi.org/10.24853/elif.3.1.11-22>**

INTRODUCTION

Literature is a mirror of art and society is. It inspires people to present themselves as experienced members of society. Studying English literature enables people to learn new concepts and new forms of world reflection. This work demands an understanding of the cultural dynamics and the way people work in

society (Karnik et al., 2015). Literature works usually reflect the work of people in these literary works. Literary work is a built world society or a fictional fact not identical to the reality of the real world. This work is seen as a space to represent the author's life (Asmara & Kusumaningrum, 2018; Karnik et al., 2015).

In general, literary research, psychology is needed. Psychology is used because the author portrays the character and personality of the character in the story as a psychological experience. Therefore, psychology and literature are functional, in other words as a way of studying intrinsic character psychosocial factors in literary work. In other words, personalities appear to human beings (Abraham, 2017). The principle of personality applies to the various special characteristics present in any person. This value is crucial or important in people's lives (Ismawati, 2013, p. 18). Every object is colored; every person has personalities.

Personality is characterized as a series of structured, consistent psychological and intrapersonal characteristics. This affects how the individual is communicated and adapted to the psychic, physical and social environment in literary research (Burger, 2019; Larsen et al., 2017). Most scholars believe that the important approach to personality study is to analyze the actions of somebody and evaluate what they do, or indirectly, by following their responses to questions. The core assumption is that the term personality is what people do or experience. Secondly, personality is an entity or exists through the behavior of an individual. The third assumption is the relatively consistent and permanent personality so that the core is unchanged, although only more surface features can be adjusted (Peck & Whitlow, 2019, p. 9).

The personality of humans is generally divided into two personalities, the extrovert and the introvert (Abidin in Rosida & Astuti, 2015). An extrovert personality is someone who wants to

socialize with people (social friends), who prefers to socialize with people around him, friendly and welcoming to other people. While the introvert is a lonely, silent, anti-social, pessimistic, and cautious personality, he does not use too much physical activity, prefers some close friends, and is consistent (Abidin in Rosida & Astuti, 2015).

Introversion is defined from a psychological point of view as an attitude characterized by relying on one's own inner emotional actions (Jung as cited in Boroujeni et al., 2015). The difference between the Jung conception and the modern view is that Jungian extroverts and introvert people differ in their universe perceptions, while contemporary researchers tend to classify extroversion and introversion as a trait approach. A trait is the dimension of the personality used to assign labels according to the extent of a particular trait (Burger, 2019, p. 153).

In one's writing, each piece of literature includes conceptual elements connecting the various elements of the film that express the producers' ideas, such as the personality of the action sequences and the character of the main character of the film. Today, rapid film production takes place in countries with successful film industries, like India, UK, and Korea, where film firms are globalized now. Apart from drama, prose, and poetry, the film is a kind of genre in literature that offers a fictional form of a story in a different dimension. Films are the result of filmmakers' artistic process incorporating various elements including ideas, value systems, life visions, beauty, norms, human behavior, and technology innovation (Trianto, 2013, p. 1).

Wicaksono, G. A. (2020). Textual Study of How Eun Hwan Portrays Introverted

The rapid expansion in the film industry in Korea, including *Introverted Boss* Film, has produced a variety of films. *Introverted Boss* is a Korean film by Joo Hwa-mi and has sixteen episodes. The *Introverted boss* is also known as *My Sensitive boss* and *Sensitive boss*. The genre of drama is Romance and Comedy, a South Korean television series starting Yoen Woo Jin as Eun Hwan Ki, Park Hye-soo as Chae Ro Woon, Gong SeungYoen as Eun Yi Soo, and Yoon Park as Kang Woo il. This drama tells the story of a CEO of a company played by artist Yeon Woo Jin, named Eun Hwan Ki, who is shy and avoids eye-catching interaction with his workers. This led to negative rumors that he was an arrogant and cruel CEO (Wikipedia, 2020).

Regarding the distinctive characteristics, the researcher is interested in studying further the introverted character of the film's main character. Previous researchers have conducted several relevant studies. Nuraeni (2016) has conducted a study titled 'A Psychopath Analysis on Amy's Character in *Gone Girl* Movie'. This research is mainly focused on why Amy's psychopathic character arises and how her husband is affected by the character. A descriptive qualitative analysis is the method of study. There are six characteristics based on the personality theory of psychopath Amy through research results, including social desire, in contrast, very impulsive, aggressive, feeling a little guilty, and limited capacity for empathy. Besides, the development of this character is triggered by family disruption and economic aspects.

Wang's (2020) research entitled an analysis of Salieri in *Amadeus* from

Freudian Personality Theory: Id, Ego, and Superego. This study emphasizes Salieri, a Shaffer's *Amadeus* antagonist who suspected himself of Mozart poisoning. Wang's study examines Freud's character theory of "mind structure": id, ego, superego. The research looks at Salieri, to underline the logical arrangement of Shaffer's destiny in Salieri. The three characters will only develop into an integrated personality if the conflict between the id, ego, and superego are resolved.

RESEARCH METHODOLOGY

The method used in this study is qualitative research. It is a bibliographical analysis because the data comes from written and audio-visual library resources (film). This analysis is carried out with the film *Introverted Boss*. In the film that displayed introverted characters, the researcher analyzed data based on a dialog. Besides, the researcher also presented certain images to show the gesture of introverted characters.

The researcher used the method of literature study and recording, for the collection of the data. The literary study method is all the researchers' efforts to collect data pertinent to the subject or the problem to be studied. The note-taking method is a method with steps to watch the film *Introverted Boss* and to capture the important scenes in a certain minute. Two data sources, including primary and secondary data sources, are used in this analysis. The primary data source is the film *Introverted Boss* directed by Joo Hwa-mi, while the secondary data sources are the reference book on film: personality structure, literary psychology, and other relevant resources that the

researcher needs to strengthen this analysis.

FINDING AND DISCUSSION

The main character of the story to be addressed in this analysis is Eun Hwan Gi, the main character of the film *Introverted Boss*. The following will describe the character of Eun Hwan Gi, who reveals an introverted character.

The Introverted character of Eun Hwan Gi

The first introverted character is an *asocial* one. Referring to the prologue conveyed by the narrator above "Not many people have seen him, even his employees are the CEO of the company", indicating that Eun Hwan Gi is asocial and lives alone on the top floor of the company office (very rarely interact with others). This is in keeping with the statement, that the response to social concern is different from that of extroverts and introverts (Ashton et al., 2002). What's more, they are often viewed as social (Chapman, 2016).



Figure 1: Episode 1 (00:15:21- 00:16:07)

Narrator: never look into his eyes, if your eyes meet, your heart will freeze, and he can skin you. Not many people have seen him, even his employees are the CEO of the Company, but hiding like a ghost there

are many rumors about the reason he keeps hiding ... "

The scheme of a dinner between Mr. Kim and his employees to celebrate the successful presenting is another situation that indicates the asocially introverted Character. The dinner place is attended by Eun Hwan Gi. He, however, decided not to join or eat with his employees. It's because he hears conversations about himself.



Figure 2: dinner to celebrate a successful presentation - Episode 1 (00:27: 24-00:28:34)

Employee 1: just be honest! What did EunDaePyo do?

Employee 2: There is no. He did nothing at all.

Employee 1: if it wasn't for CEO Kang's hard work

Kang Nim : I am very honored, but, EunDaepyo is my friend, I tell you I like to tell, you know. So don't talk bad about him, okay Understand him for me.

The second introverted character is *shyness*. The photo above shows when team members, including Kang Nim, came to Eun Hwan Gi's room to get to know each other before beginning work. As Kang Nim introduced the team members to Eun Hwan Gi, he avoided eye contact with them and was either very annoyed or concerned about the group's interaction. The behavior of Eun Hwan Gi can be seen, who covered himself with a hoodie and

turned away. Behaviors such as this explain introverts being more retired and reserved in social situations (Nelson & Thorne, 2012).

One common misperception is that shyness is equivalent to introversion. The notion of shyness, however, is distinct from introversion. According to the American Psychological Association, shyness is the tendency during social encounters to feel awkward, worried, or tense, especially with unfamiliar individuals and circumstances" (American Psychological Association, 2020). On the other hand, introversion is a higher-level personality trait (Jones et al., 1986).

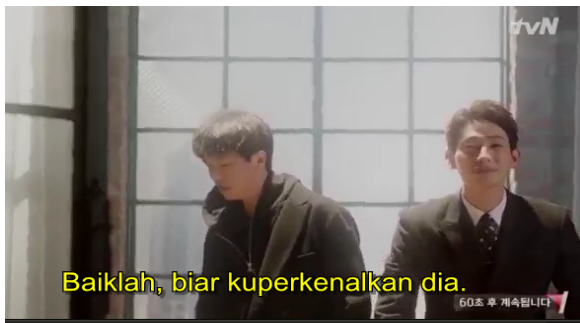


Figure 3: Kang Nim introduces team members to Eun Hwan Gi.

Kang Nim: You arrived on time. Say hello! Do you want to introduce yourself? Alright, let me introduce him. He is the Silent Monster Boss, Eun Hwan Gi.

The third introverted character is *fearful*. When Eun Hwan Gi presented his product to the judges, Eun Hwan Gi was scared, nervous, and speechless. Immediately Eun Hwan Gi Flash thought back to when he was a boy, once he joined the choir. The Choir experiences are the same factor that represented Eun Hwan Gi's dislike of dealing with people.



Figure 4: Eun Hwan Gi flashed back his memory when he was little when he was in the choir at his school (00:52:06 – 00:53:48).

Monologue: "A person's fear always has a reason. Father wants me to be a leader. Great leader, he does not allow me to have even the slightest fear"

The fourth introverted character is *thinking a lot before action*. As the following image and monologue (see figure 5), when one of his employees tried to give Eun Hwan Gi a glass of coffee, he criticized the coffee given because it was too sweet and bitter, and Eun Hwan Gi took a glass of water to neutralize it and Eun Hwan Gi felt confused about what he was doing. Moreover, Eun Hwan Gi thought of his solution more so than telling them he didn't like bitter black coffee, only throwing it away, adding a little sugar, and so on.

According to McCrae & Terracciano (2005), introverts are less likely and have lower energy levels to engage in a social situation. People see them as passive, and rather than reacting, they seem to prefer to think. Before acting, Eun Hwan Gi always thinks a lot because he will always consider the consequences that will occur from his actions.



Figure 5: Eun Hwan Gi in the kitchen to get a glass of water to neutralize the bitter taste of coffee given by one of his employees - Episode 3 (00:24:44-00:25:38)

Monologue: "I always wear a black suit, but that doesn't mean I like bitter black coffee. I only drink caramel macchiato, coffee mocha with whipped cream, or coffee with lots of sugar and cream. Should I just tell my taste to them? No, no. They might sideline it carefully when buying coffee for me. I can't be bad. Should I just throw the contents into a drain, while no one is watching? They went all the way to buy it for me. Should not. Should I add a lot of sugar? But, one jar of sugar is not necessarily enough. I might become diabetic. But, drinking bitter coffee like this can make my digestion disturbed, should I just add water?"

The fifth introverted character is **anxious**. In the following episode, Eun Hwan Gi helped to prepare materials for a presentation by one of the employees he had selected before the day of the meeting. However, as the day of the venue began, the employee he had selected could not come because his child was ill.

Thus, Eun Hwan Gi had to replace his employees to present the product. In the following conversations and images, Eun Hwan Gi is anxious to make a presentation. It was seen that he was very anxious (taking a lot of breath), he spoke nervously, he felt cold, and his hands were shaking.



Figure 6: Eun Hwan Gi substitutes one of his employees to demonstrate his product.

Mc: Now the silent monster will make a presentation. Please start the presentation. (Eun Hwan Gi repeatedly sighs to get rid of his nervousness)

Participant: Hey, what are you waiting for!

Eun Hwan Gi: Eum... me.... me..... silent.....

Mc: We don't have much time, please start.

Eun Hwan Gi: um, I am..... (Eun Hwan Gi cold sweat and numb his hands)

Participant: what did he do say something

Mc: Looks like you're a bit nervous. ... please relax. (Eun Hwan Gi, drop the microphone and leave the presentation room).

The sixth introverted character is **closeness**. Research has shown that extroverts and introverts have different strategies to develop new relationships. Introverts tend to make friends more

Wicaksono, G. A. (2020). Textual Study of How Eun Hwan Portrays Introverted

slowly than extroverts, and suddenly and quickly, extroverts tend to be friends with others. Similarly, if friendship formation were like entering a swimming pool, entering with an extroverted partner would feel like jumping in whereas entering with an introverted partner would feel like diving one's toes into the water and slowly immersing oneself (Nelson & Thorne, 2012). In the following prologue, the sentence "he has a friend" refers to Kang Nim who is Eun Hwan Gi's friend who always helps him in his company. Kang Nim is a friend that Eun Hwan Gi trusts. He is the only person that Eun Hwan Gi trusts when it comes to making presentations or meeting employees.

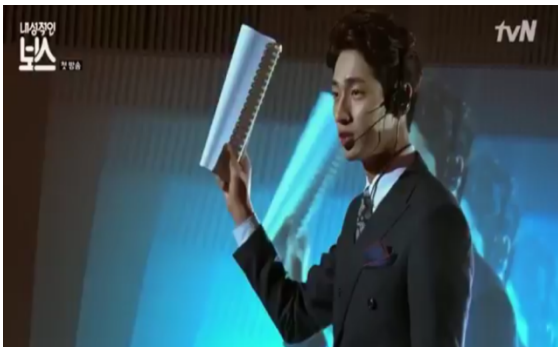


Figure 7: Kang Nim is presenting for the Opera show (00:16:21 – 00:16:32)

***Monologue:** Thanks to his father, he inherited the best public relations agency in the country. And fortunately also, he has a smart friend who is not fortunate to be his slave*

Causes of Eun Hwan Gi have an Introverted character

The first cause why Eun Hwan Gi has an Introverted character is *his family pressure*. This can be seen as Eun Hwan Gi's past, Kim Eung Soo (Eun Hwan

Gi's father), has always told him to obey his father's wishes.



Figure 8: Eun Hwan Gi was at the barbershop when she was young to shave her hair with her father - Episode 5 (00:51:12 – 00:51:42)

*Kim Eung Soo: Speak! Come on Speak!
Eun Hwan Gi: Please do anything.
Kim Eung Soo: Is that all you can say? Why do you let other people determine your hairstyle? You can't express your opinion properly! Why are you so shy! OK. If you don't want to talk, let me!*

The second cause why Eun Hwan Gi has an Introverted character is *being bullied by his friends*. This episode tells about when Eun Hwan Gi was still in school. When he was walking in the park, his friends treated him badly only because he had curly hair. The bladder incident influenced the psychological condition of Eun Hwan Gi so that it was assumed to have occurred in an introverted character.



Figure 9: Eun Hwan Gi is remembering the time at school. When he was walking on the field - Episode 5 (00:51:44 - 00:51:57)

Friends 1: Hey, curly. Curly !!
Friends 2: Where are you going, Curly? Are you an ahjumma? The cut is really ugly.

Eun Hwan Gi's Efforts to Reduce His Introverted Character

The first effort of Eun Hwan Gi is *by doing exercise*. Eun Hwan Gi consulted to Kim Hye Eun, a psychotherapist about his condition. The psychotherapist recommends Eun Hwan Gi to exercise regularly.



Figure 10: Eun Hwan Gi exercises in a recreation area with a psychotherapist - Episode 1 (00:25:11- 00:25:19)

Kim we've been like this for three
Hye Eun: years. We try to see the development. And until when do we only consult like this? (Then, Kim Hye Eun advised Eun Hwan Gi) exercising there many times..... practice again and again

The second effort of Eun Hwan Gi is *playing a game* together with the team. Kang Nam, Eun Hwan Gi, and the silent monster team take a vacation on the weekend and play "Talk to Your Body". Playing "Talk with Your Body" deliberately held by his team with the aim

of Eun Hwan Gi indirectly trained Eun Hwan Gi to speak using expressions and the presence of emotional, social closeness and made Eun Hwan Gi able to communicate with his work team.



Figure 11: Eun Hwan Gi plays "Talk with Your Body" - Episode 6.

Eun Hwan (Eun Hwan Gi tried to express something meant by using his body)Rajawali? he is king in the sky. This bird intimidates others with just the sharpness of its gaze. (talking to myself).

Guest 1: Superhero

Guest 2: Laser light

Eun Hwan And he has mighty wings and the way he flies is portrayed so incomparably (talking to himself)

Guest 2: expand your body movements! Hard to guess.

MC: time is up. Change matter

Guest 1: what the answer?

Mc: rajawali

The third effort of Eun Hwan Gi is *socializing practice* with the team. Chae Ro Woon invites Eun Hwan Gi to accompany him to come to the orphanage to entertain the children in the orphanage. Eun Hwan Gi appeared in front of the children in panda costumes.

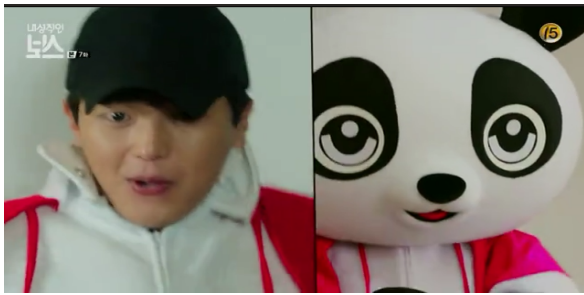


Figure 12: Eun Hwan Gi dances in front of the children in panda costumes (00:18:55-00:19:20)

Eun Hwan Gi: "No problem, my face is covered. No problem, they are only children. I never thought adults would also enjoy it "I have changed"(talking to myself).

The photo below shows the moment when Eun Hwan Gi asked his team to have dinner together. This is done as suggested by his therapist to reduce his introverted character. In summary, Eun Hwan Gi's attempts to socialize, including attempting to appear in front of people and children wearing panda costumes, trying to sit down at one table while working and having dinner, and taking pictures with the team were essentially done by Eun Hwan Gi to practice social interaction and become more optimistic.



Figure 13: Eun Hwan Gi dinner together with the team – Episode 7 (00:22:44-00:23:13)

Eun Hwan Gi: it's still too difficult to deal with many people. I can never be a leader

Kim Hye Gi come on You're the main character. Do you want to be a supporting actor? next time you have to try to dinner with your team dinner. Put your arms over their shoulders, then take a picture together.

CONCLUSION

In the study of the representation of the Introverted Boss film, the introvert characters that the researchers find in the character Eun Hwan Gi in the Introvert Boss film are asocial, shy, anxious, thinking a lot before acting, restless, and close. Besides, researchers also found that the reason Eun Hwan Gi became introverted was due to family pressure and bullies. The family pressure portrayed in this film is that Eun Hwan Gi's father has the ambition to make his son brave, to express his expectations, and to appear in front of the audience. Meanwhile, the bully's scenario that appears in this film is when his friends tease him as a critic, as well as the character Eun Hwan Gi, who is shy, so it's not easy to get along with classmates.

Besides, researchers have also identified numerous attempts by Eun Hwan Gi to overcome his introverted character, i.e. to exercise, play games, and practice socializing. The psychotherapist advises Eun Hwan Gi to exercise intensively so that Eun Hwan Gi can build confidence and relieve anxiety. Playing games is also being arranged by Kang Nim so that Eun Hwan Gi can be friendly or have chemistry with his team and no more unpleasant feelings when dealing with his team. Besides, researchers have also found that Eun Hwan Gi's efforts are

attempting to socialize. Eun Hwan Gi's way of socialization is such as attempting to sit down together or mingle with his team while having meetings, inviting his work team to have dinner and take photos together, and other attempts to make Eun Hwan Gi socialize with others.

In the future, the *Introvert Boss* film is a great movie and can be used as a primary reference to identify the introverted character of the central figure. This film portrays not just the introverted character of the main player, but also the triggers and efforts of Eun Hwan Gi to overcome his introverted character in the *Introvert Boss* film. So the researchers also hope that this study will be a starting point for other researchers.

REFERENCES

- Abraham, I. (2017). Struktur Kepribadian Tokoh dalam Novel Surat Kecil untuk Tuhan Karya Agnes Davonar. *KEMBARA: Jurnal Keilmuan Bahasa, Sastra, Dan Pengajarannya (e-Journal)*, 3(1), 55–63. <https://doi.org/10.22219/KEMBARA.V3I1.4378>
- American Psychological Association. (2020). *Shyness*. American Psychological Association. <https://www.apa.org/topics/shyness>
- Ashton, M. C., Lee, K., & Paunonen, S. V. (2002). What is the central feature of extraversion? Social attention versus reward sensitivity. *Journal of Personality and Social Psychology*, 83(1), 245–252. <https://doi.org/10.1037/0022-3514.83.1.245>
- Asmara, R., & Kusumaningrum, W. R. (2018). Pembongkaran Puitik terhadap Diksi-Diksi Gender dalam Sajak-Sajak Dorothea: Kontra Hegemoni Dunia Penciptaan Kaum Lelaki. *Poetika*, 6(1), 1. <https://doi.org/10.22146/poetika.v6i1.34842>
- Boroujeni, A. A. J., Roohani, A., & Hasanimanesh, A. (2015). The Impact of Extroversion and Introversion Personality Types on EFL Learners' Writing Ability. *Theory and Practice in Language Studies*, 5(1). <https://doi.org/10.17507/tpls.0501.29>
- Burger, J. M. (2019). *Personality* (10th ed.). Cengage Learning.
- Camodeca, M., & Goossens, F. A. (2005). Aggression, Social Cognitions, Anger and Sadness in Bullies and Victims. *Journal of Child Psychology and Psychiatry and Allied Disciplines*, 46(2), 186–197. <https://doi.org/10.1111/j.1469-7610.2004.00347.x>
- Chapman, L. (2016). *8 Myths About Introverts That We Need to Stop Believing*. *Introvert, Dear*. <https://introvertedear.com/news/myths-about-introverts-that-we-need-to-stop-believing/>
- Ismawati, E. (2013). *Pengajaran Sastra*. Ombak.
- Jones, W. H., Briggs, S. R., & Smith, T. G. (1986). Shyness. Conceptualization and Measurement. *Journal of Personality and Social Psychology*, 51(3), 629–639. <https://doi.org/10.1037/0022-3514.51.3.629>
- Karnik, B., Sheikh, S., & Ahmad, J. (2015). The Role of English Literature in Reconstruction Society. *Journal of Culture, Society and Development*, 7, 1–3. <https://doi.org/10.1.1.1018.7987>
- Larsen, R. J., Buss, D. M., Wismeijer, A., Song, J., & Berg, S. M. van den. (2017).

Wicaksono, G. A. (2020). Textual Study of How Eun Hwan Portrays Introverted

- Personality psychology: Domains of knowledge about human nature.* McGraw Hill Education.
- McCrae, R. R., & Terracciano, A. (2005). Personality Profiles of Cultures: Aggregate Personality Traits. *Journal of Personality and Social Psychology*, 89(3), 407–425. <https://doi.org/10.1037/0022-3514.89.3.407>
- Nelson, P. A., & Thorne, A. (2012). Personality and Metaphor Use: How Extraverted and Introverted Young Adults Experience Becoming Friends. *European Journal of Personality*, 26(6), 600–612. <https://doi.org/10.1002/per.1839>
- Nuraeni, C. (2016). A Psychopath Analysis on Amy's Character In Gone Girl Movie. *Wanastra: Jurnal Bahasa Dan Sastra*, 8(2), 46–52. <https://doi.org/10.31294/W.V8I2.2109>
- Peck, D., & Whitlow, D. (2019). *Approaches to Personality Theory.* Routledge.
- Rosida, E. R., & Astuti, T. P. (2015). Perbedaan Penerimaan Teman Sebaya Ditinjau dari Tipe Kepribadian Ekstrovert dan Introvert. *Empati*, 4(1), 77–81. <https://ejournal3.undip.ac.id/index.php/empati/article/view/13120>
- Satalina, D. (2014). Kecenderungan Perilaku Cyberbullying Ditinjau dari Tipe Kepribadian Ekstrovert dan Introvert. *Jurnal Ilmiah Psikologi Terapan*, 02(02), 2301–8267. <https://doi.org/10.22219/IJPT.V2I2.2003>
- Trianto, T. (2013). *Film Sebagai Media Belajar.* Graha ilmu.
- Wang, J. (2020). An Analysis of Salieri in Amadeus from Freudian Personality Theory: Id, Ego, Superego. *3rd International Conference on Interdisciplinary Social Sciences & Humanities (SOSHU 2020)*. <https://doi.org/10.25236/soshu.2020.015>
- Wikipedia. (2020). *Introverted Boss.* Wikipedia. https://en.wikipedia.org/wiki/Introverted_Boss

